

FELLOWS ROAD LONDON, NW3

£1,850 PER MONTH

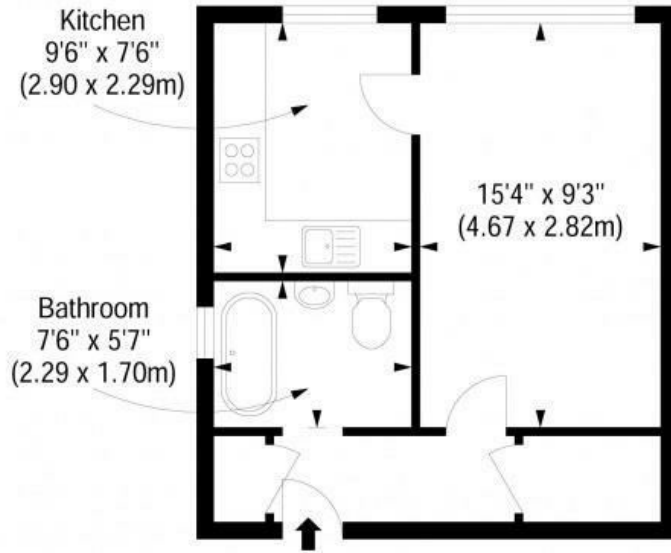
Well presented studio flat situated in a prime location close to Swiss Cottage underground station on the twentieth floor of this well maintained purpose built block.

The property offers amazing panoramic views over London from its south facing living/sleeping area and fully fitted kitchen with ample storage, separate bathroom and WC. Within easy reach of the local shops and amenities of Swiss Cottage, Primrose Hill and Regents Park.

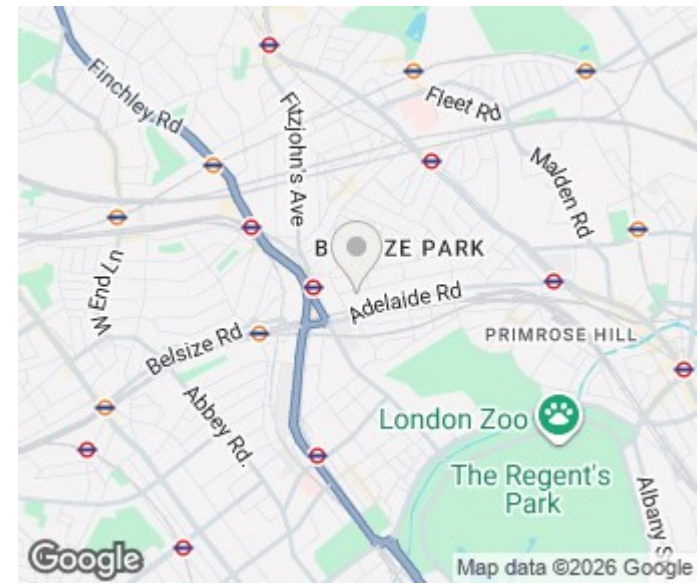
PMP | INTERNATIONAL

Bray Fellows Road

Approximate Gross Internal Area 325 sq ft / 30.19 sq m



Twentieth Floor



Energy Efficiency Rating		
	Current	Potential
Very energy efficient - lower running costs		
(92 plus) A		
(81-91) B		
(69-80) C	72	73
(55-68) D		
(39-54) E		
(21-38) F		
(1-20) G		
Not energy efficient - higher running costs		
England & Wales	EU Directive 2002/91/EC	

Agents Note: Whilst every care has been taken to prepare these particulars, they are for guidance purposes only. All measurements are approximate and are for general guidance purposes only and whilst every care has been taken to ensure their accuracy, they should not be relied upon and potential buyers/tenants are advised to recheck the measurements

London
PMP International
94 Belsize Lane
Belsize Park
London
NW3 5BE

020 7701 2878
info@pmpi.co.uk
www.pmpi.co.uk

PMP | INTERNATIONAL